



Sept 2012. Queensland Tropical Health Alliance public forum on the diseases you catch in a changing world. Graham Mitchell - moderator.

Talk entitled "As humanity destroys the planet, will the planet fight back with disease or will it be concreted over before it gets the chance?"

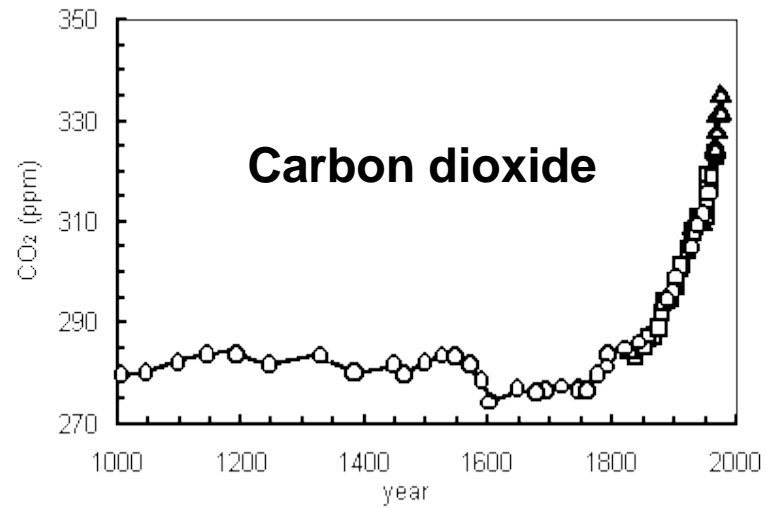
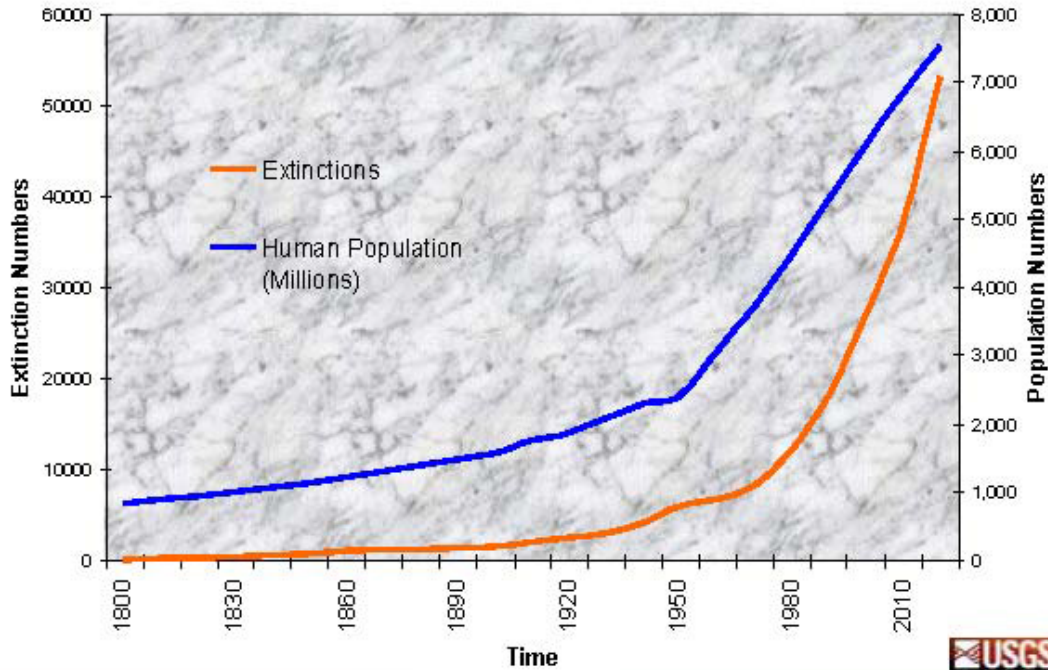
Disclaimer

The opinions expressed may include notions conceived entirely by A. Suhrbier.

The opinions expressed do not intentionally represent those of any body or organisation.

Any unauthorised dissemination of the contents would be greatly appreciated.

Species Extinction and Human Population



About half of the world's original forests have been destroyed

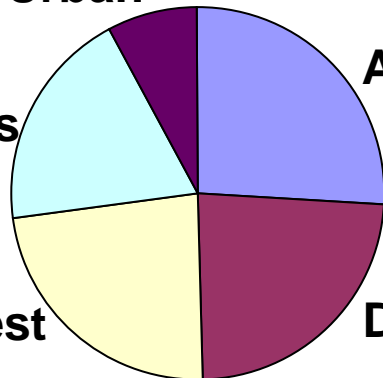
Urban

Agriculture

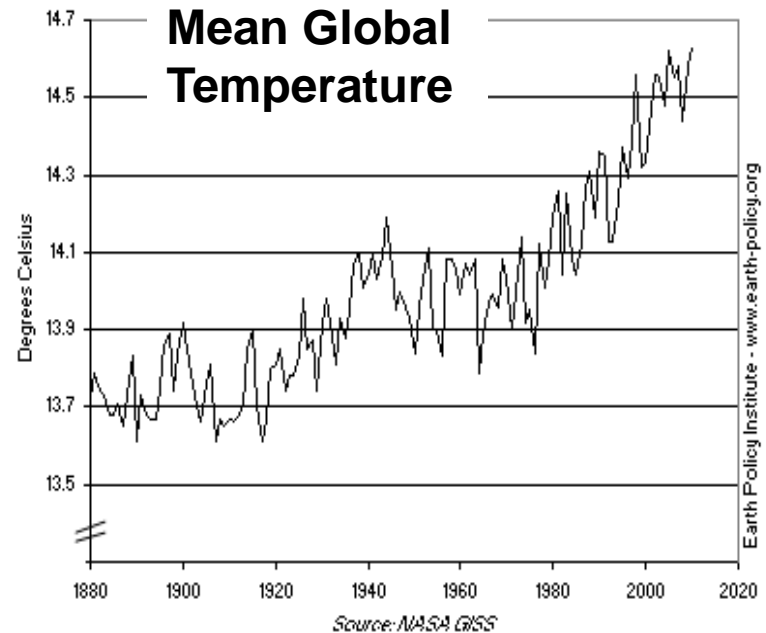
Mountains

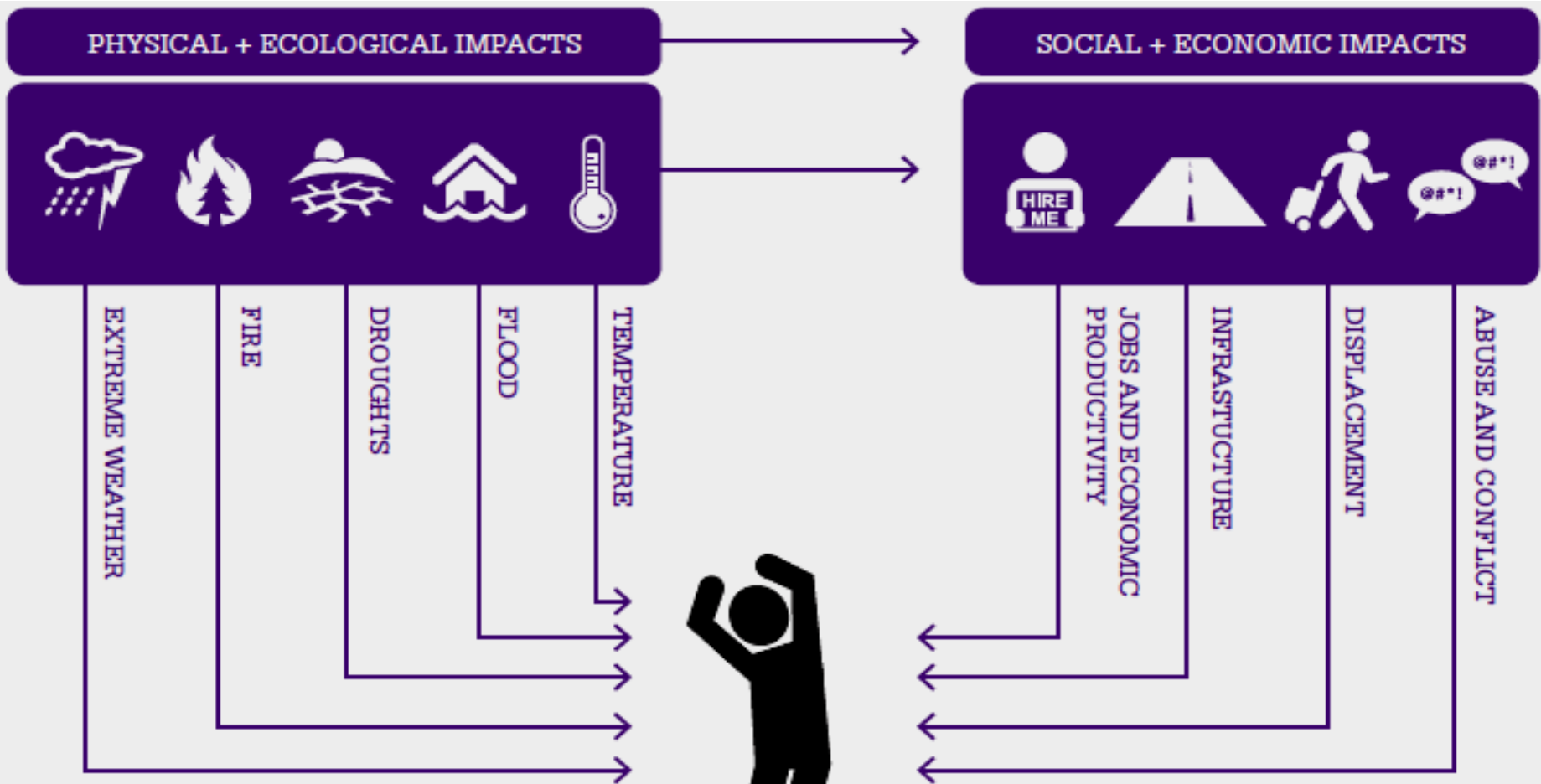
Forest

Desert



% OF EARTH'S LAND AREA (estimate)





Climate Commission: THE CRITICAL DECADE: CLIMATE CHANGE AND HEALTH. 2001

Infectious diseases
Poorer nutrition

Mental and other disorders

Injuries and deaths

CORE BODY TEMPERATURE

37°C



38°C+



39°C+



42°C+



kidney disease, acute renal failure, heart attacks,

Projected number of days over 35°C in Australian capital cities

MELBOURNE:

SYDNEY:

BRISBANE:

ADELAIDE:

PERTH:

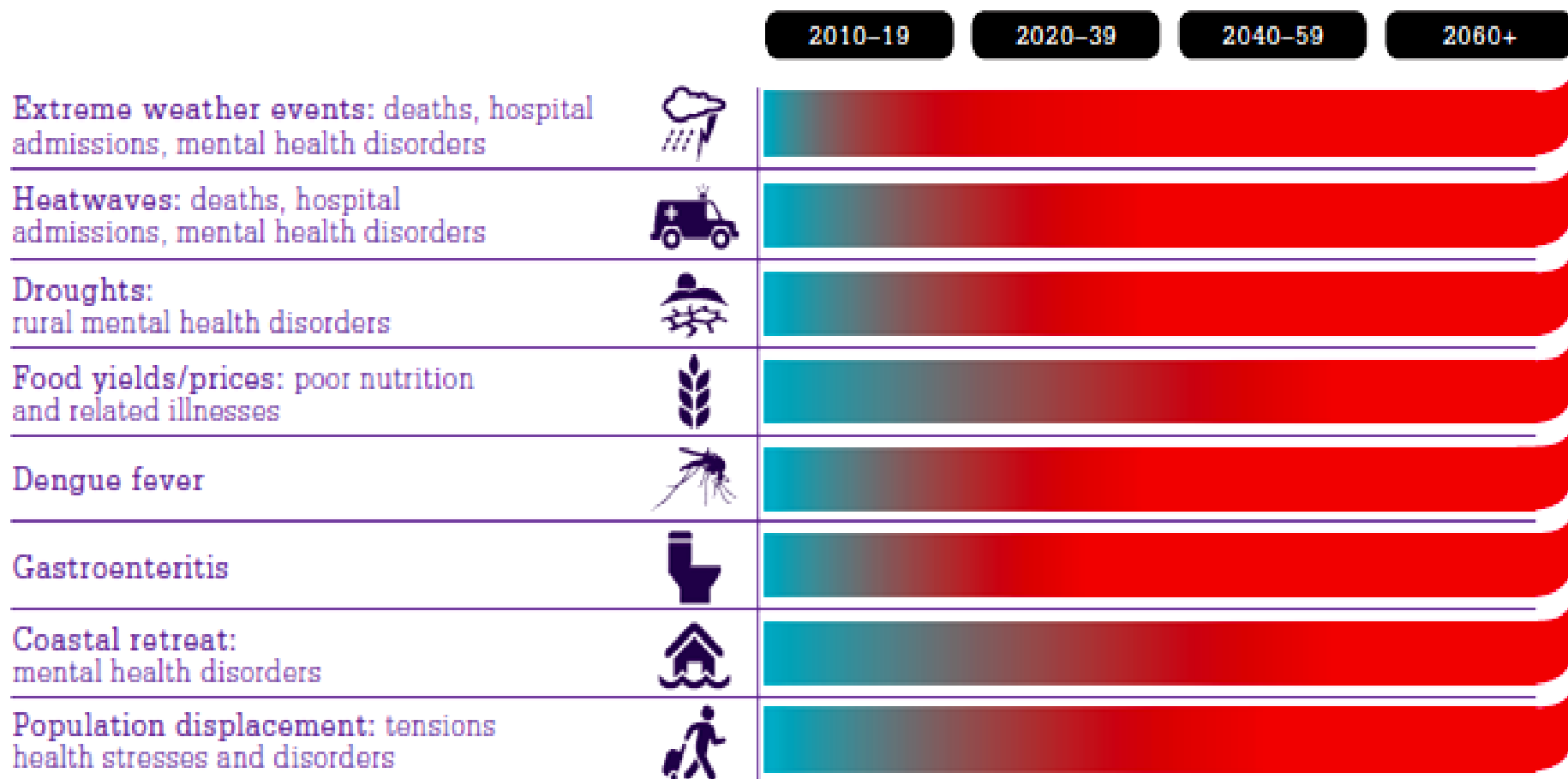
CANBERRA:

DARWIN:

HOBART:

	2008	2030	2070	2100
MELBOURNE:	9	12	21	27
SYDNEY:	3.3	4.4	9	14
BRISBANE:	0.9	1.7	8	21
ADELAIDE:	17	22	34	44
PERTH:	27	35	56	72
CANBERRA:	5	8	21	32
DARWIN:	9	36	221	312
HOBART:	1.4	1.7	2.5	3.4

Figure 8: Possible timeline of some future adverse health impacts in Australia from climate change.



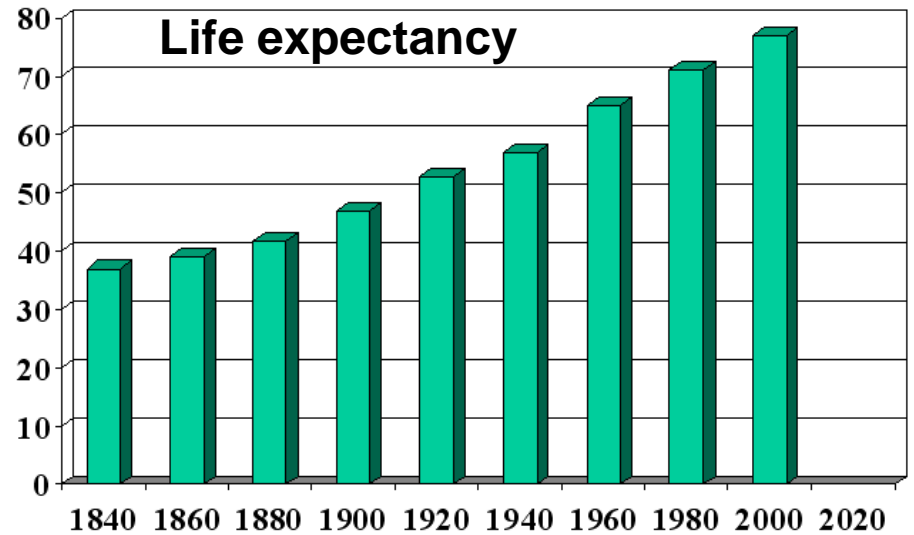
CLIMATE CHANGE WILL AFFECT OUR MINDS

Hospital admissions for mental and behavioural disorders rise once ambient temperatures go above 27°C.

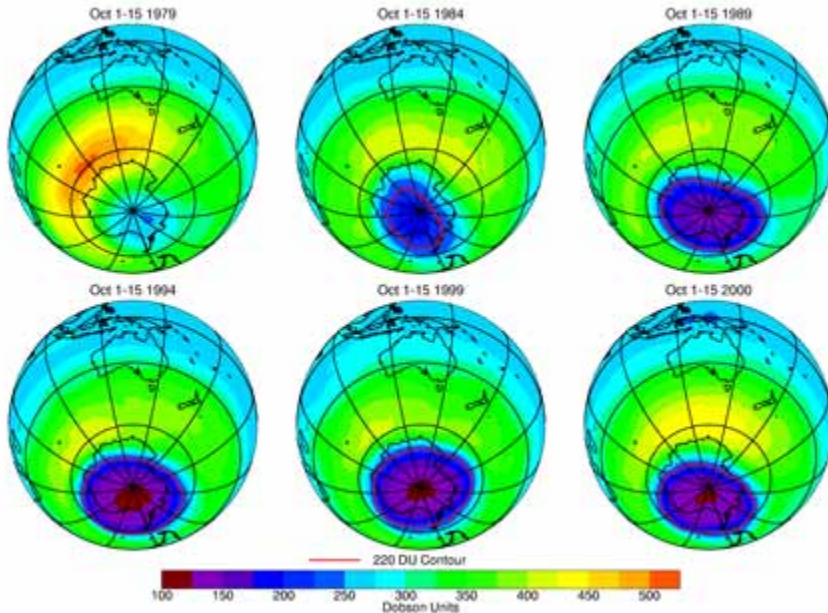
In metropolitan South Australia, admissions for mental, behavioural and cognitive disorders have been found to increase by around 7% during heatwaves. Access block.

In New South Wales a study found that a decrease in annual rainfall by ≈ 300 mm would lead to increase in the suicide rate by about 8%.

MORE UV - MORE SKIN CANCER



Ozone depletion



- Skin cancer is the most prevalent cancer worldwide with **an annual 5-8% increase in incidence since 1964.**
- Two-thirds of Australians will be diagnosed with a non-melanoma skin cancer (NMSC) by the age of 70.
- Every year, over 430,000 Australians are treated for skin cancer, $\approx 1,000$ people per day.

WHY IS THE MESSAGE NOT GETTING THROUGH?

Corporate/banking megapoly

BELIEF SYSTEM— economic growth is paramount. Greed is Good.

POWER – run the world

PR - billion \$ budget and sophisticated

POLITICAL INFLUENCE – governments largely elected as economic managers.

RISK ASSESSMENTS – short term economic issues.

PUBLIC PERCEPTION – mistakes allowed, uncertainly accepted - despite mega\$ in research.

Climate change scientists (NERDS)

BELIEF SYSTEM – Publishing in Nature is cool

POWER – Not applicable

PR – a dept. on B floor, I think

POLITICAL INFLUENCE – 3-5 year government employment contracts.

RISK ASSESSMENTS – long term & complicated and uncertain.

PUBLIC PERCEPTION – expectation of certainty, despite limited research budget.

Failures of the climate change lobby

Scientists have forgotten Aristotle

To win an argument you need LOGOS, PATHOS, ETHOS

LOGOS – (Logical) means persuading by the use of reasoning; your argument must be logical and evidence based.

PATHOS – (Emotional) persuading by appealing to the listener's emotions.

ETHOS – (Credibility) – the argument must be made by someone who is viewed as trustworthy and who has the appropriate ethical framework.

Too much LOGOS Al Gore.



Example of 100% Pathos

UK Food Industry advertising

This wholesome nutritious natural milk was willingly provided by happy cows lovingly tended using traditional farming practices unchanged for millennia by our dedicated farmers who know each cow by name.

Humans are governed by politicians

Humans want ever more stuff and vote for politicians that promise them more stuff

There is little political gain in warning against a future disaster

**VOTE FOR ME AS I'M GOING TO TAX YOU SO I
CAN FUND MITIGATION OF IMPENDING
ENVIRONMENTAL AND HEALTH DISASTERS**

**VOTE FOR ME I WILL LOWER TAX SO YOU CAN
BUY A FLAT SCREEN TV**



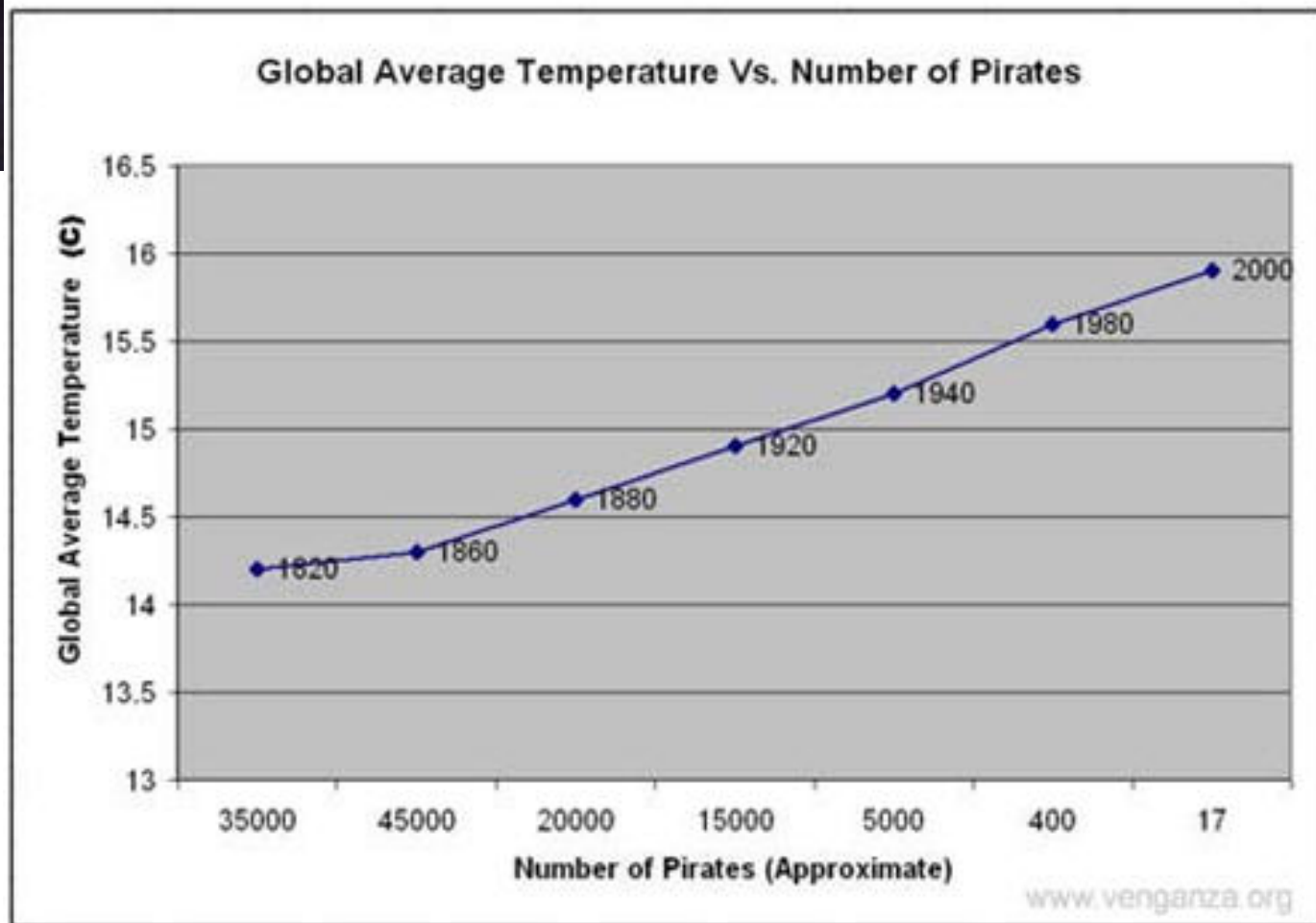
Example of unintelligent design

Convert from Fahrenheit to Celsius and the temperatures will automatically come down

The amount of nonsense out there is amazing.

Even mileage in taking the Mickey out of nonsense.

STOP GLOBAL WARMING: BECOME A PIRATE



If you want to provide major grief to humanity, infectious disease definitely works.

* **Chikungunya virus** - 1.5 – 6 m people chronic rheumatic disease.

HIV – 40 – 50 million HIV infected.

Influenza - pandemic of 1918-1919 killed 20 - 40 million people

* **SARS** – 8,096 known infected cases, 774 deaths. \$15 billion loss for tourism

* **Smallpox** – Regularly decimated European populations. Eradicated by global vaccination.

* **Black Death (Yersinia Pestis)** – 14th C killed 1/3 European population

* **Fully unexpected**

* Bioweapons - **Ken Alibek's Biohazard**

SMALL POX OUTBREAK !

.....NOT CONTAINED !

1972 outbreak in Yugoslavia

175 cases, 35 dead.

Infected people travelling all over the country.

THE APPROPRIATE RESPONSE !

- Yugoslavia closed its borders.
- Forced vaccination of 19 million people.
- Forced quarantine of 10,000 people for 2 weeks or more.







Golden Buckshot

Every bit helps

From the small

Switch off lights

Plant trees

Cycle to work

Roof insulation

Solar Power

Buy less crap

Consume less

Vote for the environment

To the median

Activism through
social networks

Local solutions

- Finland – sawdust
power plant

- Qld. - Land for
Wildlife

TO THE BIG

Underwater Tidal Turbines

Hammerfest Strøm

1000kW turbine,
named HS1000.
Feeding the grid in
February 2012.

Orkney Islands
Scotland

